

GROUP 20: POWER TAKE-OFF

Reconditioned NOS Power Take Off



Vehicle Type: B,C,(D 1946-50 - front output only)
Part #CC924236 **\$475**

PTO Drive Shaft End Plate



- NOS Vehicle Type: B,C Part #CC926157 **\$45**
- New Vehicle Type: D 1956-71 with synchro. trans. Part #CC1668741 **\$65**
- New Vehicle Type: E Part #CC1270182 **\$55**

NOS PTO Drive Shaft Oil Seal Retainer Plate



[ORD #7705786] Vehicle Type: D,E
Part #CC1193740 **\$22.50**

New Locking Winch Drive Shaft PTO Collar



Includes Standard Set Screw
Vehicle Type: A,B,C,D,E,F
[ORD #DH-4172] Part #CC1088378 **\$10**

NOS PTO Shaft Locking Collar Screw



Vehicle Type: A,B,C,D,E,F
[ORD #7351137] Part #CC1088377 **\$3.50**

New Woodruff Winch Drive Shaft & PTO Shaft Key



(2) required
Vehicle Type: A,B,C,D,E,F
Part #CC271422 **\$7.50 Each**

NOS PTO Sliding Gear



• Vehicle Type: D,E
[ORD #7705756] Part #CC1190431 **\$45**
• Vehicle Type: B,C
Part #CC926149 **\$45**

NOS PTO Idler Gear



[ORD #7374902]
Vehicle Type: E
Part #CC1270170 **\$45**

NOS PTO Reverse Gear



[ORD# 7351234]
Vehicle Type: B,C,D,E
Part #CC926146 **\$55**

PTO Reverse Gear Shaft



• Vehicle Type: B,C,(D 1946-early 56)
- New Part #CC926147 **\$45**
• Vehicle Type: (D 1956[late]-71),E
[ORD #7374905]
- New Part #CC1270173 **\$55**

NOS PTO Sliding Gear Drive Shaft



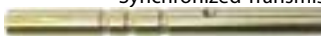
[ORD #7374906]
Vehicle Type: E
Part #CC1270169 **\$45**

NOS PTO Idler Gear Shaft



Synchronized Transmissions only.
Vehicle Type: (D 1956[late]-71),E
[ORD #7374904] Part #CC1270171 **\$18**

New PTO Shifter Shaft



Synchronized Transmissions only.
Vehicle Type: D,E
[ORD #7705755] Part #CC1193747 **\$75**

NOS PTO Shifter Fork



[ORD #7705757]
Synchronized Transmissions only.
Vehicle Type: D,E
Part #CC1190441 **\$45**

New Universal Package PTO Drive Shaft Joint Kit



Vehicle Type: A,B,C,D,E,F
Cross - CC928694, Caps - CC928695
(2) required. Part #CC996426 **\$69**

NOS PTO Universal Drive Shaft Front Joint Assy



For 1.125" Diameter Shaft
Snap Ring Type [ORD #7744199]
Vehicle Type: A,B,C,D,E,F
Part #CC1263955, CC1088209 **\$149**

NOS PTO Universal Drive Shaft Front Joint Assy



For 1.125" Diameter Shaft
Early Bolt-on retainers Vehicle Type: A,B,C
REPLACES CC1263955, CC1088209
Part #CC915848 **\$149**

New Winch Lever PTO Lock



(Early WC style) without spring works great on Civilian models
Vehicle Type: B,C,(D 1946-[early]56)
Part #CC1189834-E **\$30**

NOS Winch Lever PTO Lock



[ORD #7374742] Vehicle Type: E,F
Part #CC1278314 **\$30**

NOS PTO Lower Shifting Lever



[ORD #7351269] Vehicle Type: E
Part #CC1269863 **\$32**

New PTO Upper Shifting Lever



[ORD #7351268] Vehicle Type: E
Part #CC1273037 **\$25**

NOS PTO Lever



Vehicle Type: B,C,(D 1946-[early]56)
Part #CC924237 **\$20**

New PTO Lever



Vehicle Type: D (1956[late]-71)
Part #CC1668740 **\$60**

REP Transmission Side Cover Plate



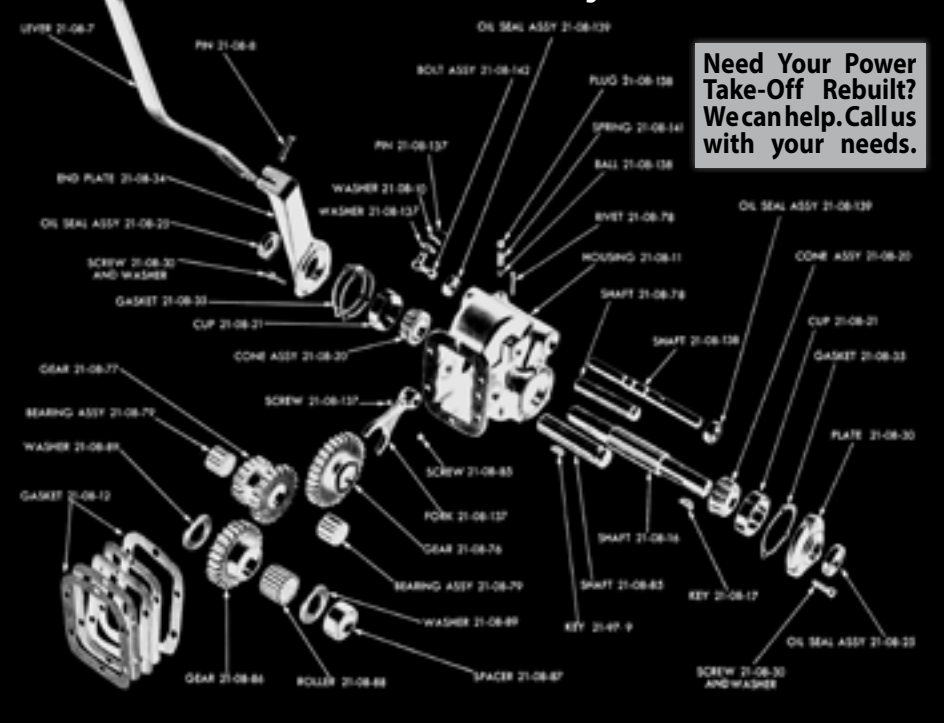
(PTO opening)
Vehicle Type: ALL
Part #CC556875 **\$12**

New 1/4" PTO Spacer Plate



Adapts 51-56 PTO to earlier transmission
Vehicle Type: B,C,(D 1946-50)
Part #N14PTOS **\$95**

Power Take-Off Assembly



Need Your Power Take-Off Rebuilt? We can help. Call us with your needs.

GROUP 20: POWER TAKE-OFF



New PTO Gasket & Seal Set

Vehicle Type: A
Part #GSS01 **\$45**



New PTO Gasket & Seal Set

Vehicle Type: B,C
Part #GSS02 **\$49**



New PTO Gasket & Seal Set

Vehicle Type: D
Part #GSS03 **\$62**



New PTO Gasket & Seal Set

Vehicle Type: E
Part #GSS04 **\$45**

New Gasket, PTO to Trans .010

Vehicle Type: ALL
Part #CC916506 **\$1.50**



New Gasket, PTO to Trans .020

Vehicle Type: ALL
Replaces CC567500 Part #CC916875 **\$1.50**



New Gasket, Drive Shaft Plate, PTO

New [ORD# 7351237] Minimum (4) reqd. for proper shims.
Vehicle Type: A,B,C,D,E
•0.010 Part #CC926158 **\$2**

New PTO Drive Shaft Seal



• Vehicle Type: A (1) required
Part # DH-2531 **\$12**



• Vehicle Type: B,C (1) required
Part #CC926155 **\$14**



• Vehicle Type: D,E (1-2) required
[ORD #7374812] Part #CC1193752 **\$15**



New PTO Shift Rail Seal

(2) required. Vehicle Type: A,B,C,D,E
[ORD #500012] Part # CC926162 **\$9**

Bearing Prices Subject to Change.

New PTO Drive Shaft Bearing Front & Rear Cup & Cone Sets



Vehicle Type: A

•Front Set Part #DH-4264 **\$46.50/set**

•Rear Set Part #DH-6159 **\$51.50/set**



New Reverse Idler Gear Bearing

[ORD #708224]
(2) required.
Vehicle Type: A,B,C,D,E
Part #CC926148 **\$22**



New PTO Bearing Sets

(Set 20-1) Vehicle Type: A
Part # PTOBS20-1
(7) piece Set **\$223**



(Set 20-2) Vehicle Type: B,C
Part # PTOBS20-2
(7) piece Set **\$218**



New Idler Gear Bearing

Vehicle Type: A (1) required.
Part #DH-4136 **\$27**

Vehicle Type: B,C (1) required.
Part #CC926144 **\$22**



New PTO Drive Shaft Bearing Cone

•Vehicle Type: B,C (2) required.
Part #CC926152 **\$49**

•Vehicle Type: D,E (2) required.
[ORD #7372672] Part #CC1193749 **\$60**



New PTO Drive Shaft Bearing Cup

•Vehicle Type: B,C (2) required.
Part #CC698394 **\$20**

•Vehicle Type: D,E (2) required.
[ORD #706744] Part #CC55584 **\$25**



New PTO Bearing Set

For non-synchro
(Set 20-3)
Vehicle Type: D 1946-(early)56
Part # PTOBS20-3

(6) Piece Set + 18 Needles **\$246**

New Bearing, Roller Set, Idler Gear PTO



(18) Rollers in set.
Vehicle Type: D 1946-[early]56 w/o
Synchronized Trans.
Part #CC1193744 **\$72**



New PTO Bearing Set

- Synchronized Transmission.
(Set 20-4) Vehicle Type: (D 1956 [late]-71),E
Part # PTOBS20-4 (10) Piece Set **\$290**

New PTO Idler Gear Bearing Cup



[ORD #707085]
Synchronized Trans only.
Vehicle Type: (D 1956 [late]-71),E
Part #CC1138728 **\$17**

New PTO Idler Gear Bearing Cone



Synchronized Trans only.
Vehicle Type: (D 1956 [late]-71),E
[ORD #705369] Part #CC1270175 **\$38**



New PTO Bearing Set

(Set 20-5)
Vehicle Type: (G,H 1957-68)

for NP201 transfer case mounted PTO.
Part #PTOBS20-5 (2) Piece Set **\$152**



New Rear PTO Bearing

NP201 transfer case mounted PTO.
Vehicle Type: G,H
Part #CC1505652 **\$69**



New Front PTO Bearing

NP201 transfer case mounted PTO.
Vehicle Type: G,H
Part #CC1633718 **\$69**

New PTO to Winch Shaft Assembly with Hex Shaft and Yokes



Vehicle Type: A (218 & 230 engines require drilling winch worm shaft for 5/16" shear pin)
41-1/2" Shaft Part #DH-6105-1 **\$295**

Vehicle Type: (D 1961-71 w/251 engine),F
40-13/16" Shaft Part #CC2225699-A **\$295**

Vehicle Type: (B,C requires drilling winch worm shaft for 5/16" shear pin),(D 1946-60),E - 230 Engines
38-1/4" Shaft

Replaces ORD #7412471, ORD #8327974, CC1269385, CC1269409, CC921905, DH-4171B, DH-6105-7
Part #CC926150-A **\$295**

NOS PTO to Winch Shaft (for 230 engines) Note: Splined Slip-Yokes not currently available (NOT SHOWN) Vehicle Type: B,C,(D 1946-56),E [ORD #8327974] Replaces CC1269385 Part #CC1193751 \$125

Original Power Take-Off Shaft Assembly View

