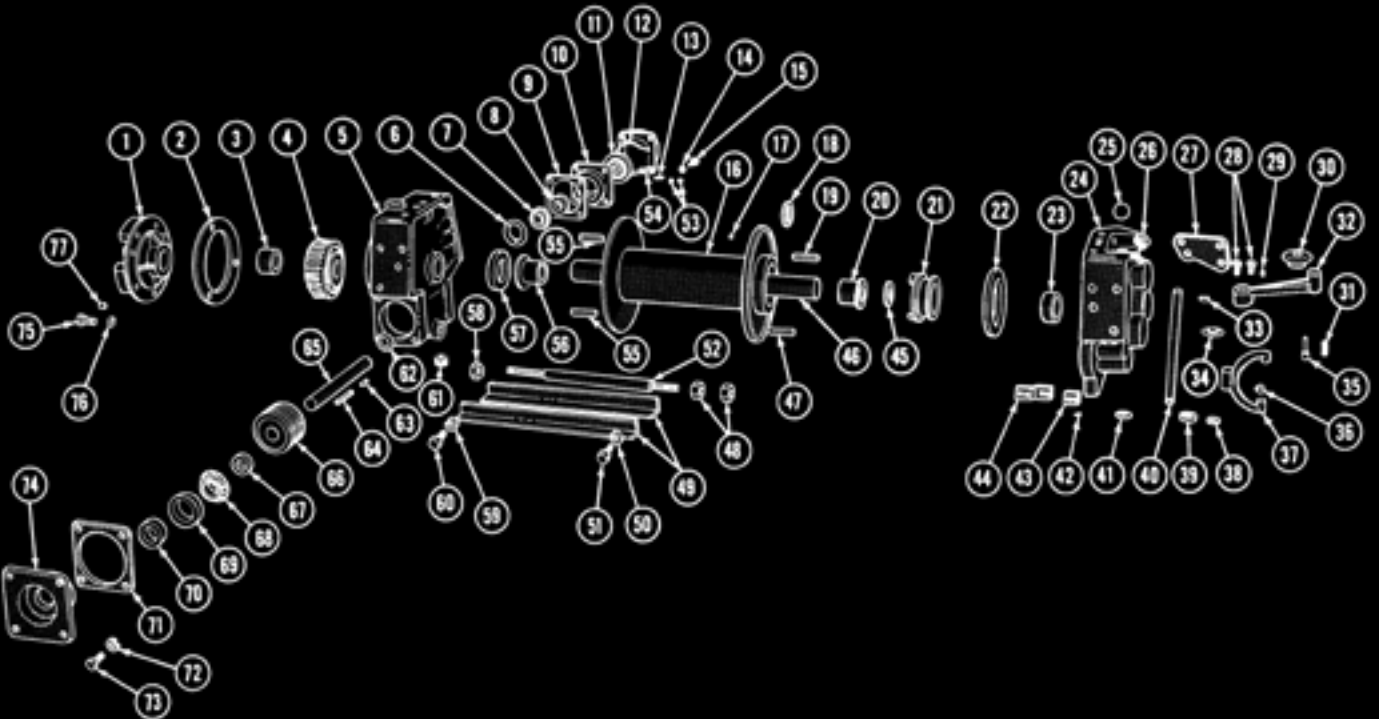
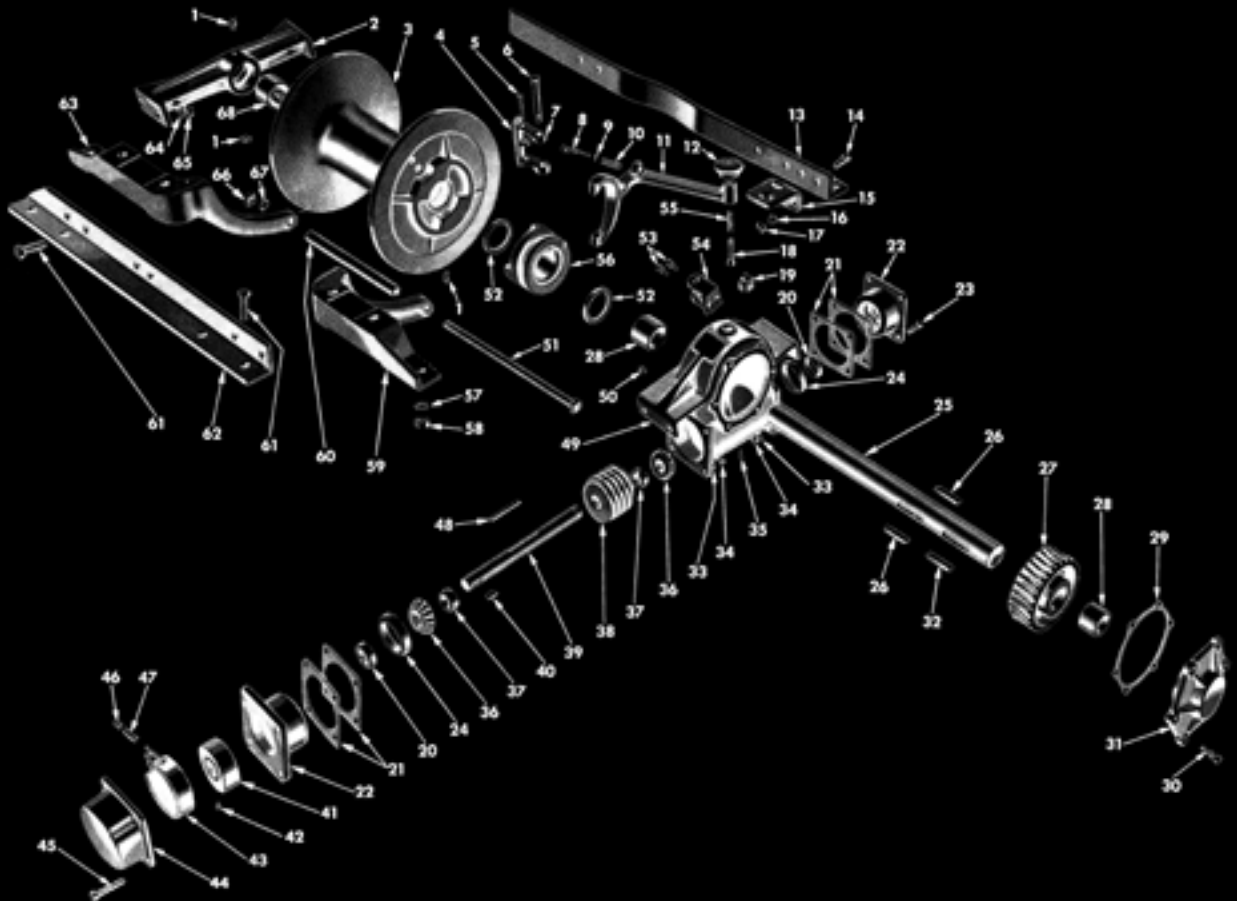


GROUP 19: WINCH

LU-4 WINCH ASSEMBLY



MU-2 WINCH ASSEMBLY



How Do I Find The Braden Winch Part I Need?

We carry parts for 4 different winch types. If you know the model of winch, you'll find multiple sections for that winch model on the next 3 catalog pages. If you don't know your winch type, find your vehicle type with its ID letter in the right column of the chart. Match your vehicle's ID letter with the Braden Winch Model # in the left column.

| Braden Winch Model # | Vehicle Types: |
|----------------------|---|
| MU | A. 1941-42 WC 1/2 ton 4x4 Military |
| MU-2 | B. 1942-45 WC 3/4 ton 4x4 Military C. 1943-45 WC 1 1/2 ton 6x6 Military D. 1945-71 1 ton 4x4 Civilian Power Wagon (flat fender only) |
| LU-4 | E. 1951-68 M-37, M-37B1 & (variants) 3/4 ton 4x4 Military F. 1951-68 Canadian M-37, M-37B1 & (variants) 3/4 ton 4x4 Military J. 1967-69 Kaiser Jeep M715, M725 1 1/4 ton 4x4 |
| LU-2 | G. 1957-71 W100 1/2 ton 4x4 or W200 3/4 ton 4x4 H. 1958-74 W300 1 ton 4x4 |

All Winch Models



New Winch Hook & Chain Assembly

New style hook
Vehicle Type: ALL

Part #CC930382-HC **\$215**

New 150' Length 7/16" Winch Cable

Vehicle Type: ALL
Replaces CC1790163, CC1269419

Part #CC915852-C **\$469**



New Winch Cable Clevis [ORD #7071880]

Attaches easily to end of cable to install chain and hook assembly

Vehicle Type: ALL
Part #7071800N **\$129**

New Winch Cable Clamp Set

(3) extra heavy duty clamps with thimble, clamps chain assembly to cable



Vehicle Type: ALL

Part #WCCS01

Call for Availability \$35/Set

NOS Winch Cable Drum Retaining Ring

[ORD #7412456]
[Braden #MU-139]

Vehicle Type: ALL
Part #CC926773 **\$39**



New Winch Sliding Clutch



[ORD #7374952]
[Braden #MU-141/M2-141]
Vehicle Type: ALL

Part #CC1273610, CC926759 **\$125**

New Winch Bearing Retainer Seal



[Braden #MU-149A/LU4-149A]
[ORD #7374957]

Vehicle Types: ALL
(2) required Part #CC926741, CC1273620 **\$15 ea**

New Aluminum Winch Bearing Retainer



[Braden #LU4-149]
Vehicle Type: E,F,G,H,J
Replaces Steel Retainer CC926746 #MU-149 for Vehicle Type: A,B,C,D
Part #CC1273598 **\$149**

New Winch Bearing Retainer Gasket

• 1/64" thick [Braden #MU-148G]
Vehicle types: ALL
Part #CC1392473 **\$2**

• 1/32" thick [Braden #MU-149G]
[ORD #5249623] Vehicle types: ALL
Part #CC926747 **\$2**

NOS Winch Safety Brake Band w/Lining



[ORD #7351201]
[Braden #MU-152-0]

Vehicle Types: ALL
Part #CC926760, CC926761 **SOLD OUT**

New Winch Safety Brake Band w/Lining



Imported (metal band is lighter duty)
[ORD #7351201]
[Braden #MU-152-0]
Vehicle Types: ALL

Part #CC926760-N, CC926761-N **\$15**

New Winch Safety Brake Drum Key



Vehicle Type: ALL
Part #CC124553, CC113782 **\$2**

New Winch Safety Brake Band Spring



[ORD #7412462]
Vehicle Type: ALL
[Braden #MU-156]
Part #CC926766 **\$4**

NOS Winch Safety Brake Drum



[Braden #MU-151]
Vehicle Type: ALL
[ORD #7412415] Part #CC926767 **\$85**

New Steel Winch Safety Brake Housing



[ORD #7374951]
[Braden #LU4-148/MU-248]
This part fits all 4 winch models, & replaces cast iron part CC926768 on MU series winches

Vehicle Types: ALL
Part #CC1273599 **\$220**

New Winch Worm Gear



[ORD #7412418]
[Braden #MU2-01R/MU-144G]
Vehicle Type: ALL
Part #CC926774 **Call for Price**

New Bronze Worm Gear Key



[ORD #7412419] Vehicle Type: ALL
[Braden #MU-101A] Part #CC926675 **\$7**

New Winch Sliding Clutch Key



[ORD #7351200]
Vehicle Type: ALL
[Braden #MU-141A] Part #CC926772 **\$7**

New Winch Worm



[Braden #MU-100R]
[ORD #7412468]
slight surface rust
Vehicle Type: ALL
Part #CC926737 **\$245**
Call for Availability

New Winch Worm Shaft Key



[Braden #MU-100A]
Vehicle Type: ALL
[ORD #7351199] Part #CC926743 **\$7**

NOS Winch Worm Housing or Cover Bushing



[ORD #7412403]
(2) required for MU & MU-2,
(3) required for LU-4
[Braden #MU-134B] (No hole for grease zerk) Vehicle type: ALL
Part #CC926739 **\$22**

New Winch Worm Shaft Bearing Set



Vehicle Type: ALL

(Set 19-1) consists of:

A. x2 Cone Bearings CC924437 [ORD #705437]
B. x2 Bearing Races CC924438 [ORD #706845]
Part #WWBS19-1 (4) Piece Set **\$118**

A. New Winch Worm Shaft Cone Bearing replaces CC924437 Part #CC927014 **\$36 ea**

B. New Winch Worm Shaft Bearing Race replaces CC924438 Part #CC927013 **\$37 ea**

MU, MU-2 & LU-4 Winch

NOS MU-2, MU & LU-4 Winch Shifter Fork Knob



[Braden #MU-143D]
[ORD #7412420]
Vehicle Type: A,B,C,D,E,F,J
Part #CC926753 **\$35**

NOS MU-2, MU & LU-4 Winch Clutch Shifter Handle Knob Shaft



[ORD #7412454]
[Braden #MU-143E]
Vehicle Type: A,B,C,D,E,F,J
Part #CC926754 **\$22**

New MU-2, MU & LU-4 Winch Clutch Shifter Handle Spring



[Braden #MU-143S]
Vehicle Type: A,B,C,D,E,F,J
[ORD #7412464] Part #CC926757 **\$7**

New MU-2, MU & LU-4 Winch Worm Shafts

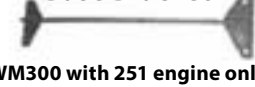
Vehicle Type: A, (B,C early)
• Winch Worm Shaft for 1/4" Shear Pin [Braden #MU-102] Part #CC926740 **\$89**
Vehicle Type: (B,C late), D,E,F,J
• Winch Worm Shaft for 5/16" Shear Pin [MU2-202] [ORD #7378242] Part #CC1088210 **\$89**

NOS MU-2, MU & LU-4 Winch Shear Pin

• 1/4" Shear Pin [ORD #DH-W-1102-A] Vehicle Type: A, (B,C early) Part #CC915850 **\$2**
• 5/16" Shear Pin [ORD #7373760] Vehicle Type: (B,C late), D,E,F,J Part #CC1088178, CC1189423 **\$2**

MU & MU-2 Winch

New MU-2 Winch Rear Base Bracket



WM300 with 251 engine only
Vehicle type: D 1961-71
Part #CC926782-WM **\$57**

GROUP 19: WINCH

Rebuilt Complete MU-2 Winch Assembly



Sandblasted and primed. Mounting brackets & cable guards included. New bearings, gaskets and seals. Specify year and model of truck for correct mounting brackets. Cable & chain not included, but available.

•Vehicle Type: B,C,(D 1946-60)
[Braden #MU-008] Part #CC1088217
Call For Price & Availability

•Vehicle Type: D 1961-71
[Braden #MU-2-2] Part #CC2225690
Call For Price & Availability

Need your Winch rebuilt? We can help. Call us with your needs.

NOS MU-2 Winch Cable Drum Shaft



[Braden #MU2-136] Vehicle Type: B,C,D
Part #CC926771 **\$75**

New MU-2 & MU Winch Cable U-Bolt

[ORD #G121-0124394]
Includes nuts — attaches cable to drum
Vehicle Type: A,B,C,D
Part #CC916342 **\$12**



New MU-2 & MU Winch Canvas Cable Cover



Vehicle Type: A,B,C,D
Part #WCCMU **\$75**

Reproduction MU-2 Winch Cable Guide



• Left [Braden #MU2-284L]
Vehicle Type: B,C,D
Part #CC926749 **\$129**
• Right [Braden #MU2-284R]
Vehicle Type: B,C,D
Part #CC926748 **\$129**

New MU-2 Winch Cable Guide Spacer Bolt & Nut



[Braden #MU2-184B]
Vehicle Type: B,C,D
Part #CC926751 **\$15.50**

New MU-2 Winch Cable Guide Spacer



Vehicle Type: B,C,D
Part #CC926750 **\$5**

New MU-2 Winch Base Front Angle



•Vehicle Type: B,C,D
[Braden #MU2-146F] Part #CC926781 **\$79**

New MU-2 Winch Starting Crank Support

[ORD #G121-0392751]
Vehicle Type: A,B,C,(D-early)
Part #CC599064 **\$15**

New MU-2 Winch Base Rear Angle



No hump for engine hand crank
Vehicle Type: B,C,(D except WM300)
Part #CC926782 **\$45**

New Early MU-2 Winch Shifter Fork Locating Bracket

[Braden #MU2-143C]
Vehicle Type: B,C,(D-early)
Part #CC926758 **\$20**

New Late MU-2 Winch Shifter Fork Locating Bracket

WM300 w/251 engine
Vehicle Type: D-late
Part #CC926758-WM **\$20**

New MU-2 Winch Cable Drum Shaft Bracket & Bushing

New bronze alloy. Stronger than original.
Includes Bushing MU-133B
[Braden #MU2-133-O] Vehicle Type: B,C,D
Part #CC1088376 **\$485**

NOS Winch Cable Drum Shaft Bracket Bushing

(1) required for MU & MU-2
[Braden #MU-133B]
(Has grease zerk hole)
Vehicle type: B,C,D
Part #CC926770 **\$22**

New MU-2 Winch Shifter Fork Bracket

[Braden #MU2-143A]
Vehicle Type: B,C,D
Includes (2) coarse & (2) fine thread bolts
Part #CC926755 **\$82**

New MU Winch Clutch Shifter Fork

[Braden #MU-143]
Vehicle Type: A
Part #MU-143
SOLD OUT

NOS MU-2 Winch Clutch Fork

[Braden #MU2-143]
Vehicle Type: B,C,D
Part #CC926752 **\$110**

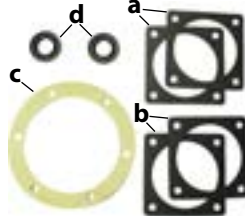
NOS & New MU-2 Winch Clutch Fork Assembly

Sold as assembly only.
Assembly consists of:
a. brake shoe with lining
b. link pin
c. shoe link assembly
d. link spring
e. clutch fork
f. fork knob
g. knob spring
h. knob shaft



Vehicle Type: B,C,D
Part #CC926752-A **\$260**

New MU-2 & MU Winch Seal & Gasket Set



Note: These parts are sold as a set.
(See below for items sold individually.)
Set consists of:

- a. (2) Bearing retainer gaskets 1/64"
 - b. (2) Bearing retainer gaskets 1/32"
 - c. Worm housing cover gasket
 - d. (2) Worm seals
- Vehicle Type: A,B,C,D
Part #CC996427 **\$41**

MU-2 & MU Winch Seal & Gasket Set - Individual Items

- a. [Braden #MU-148G]
Bearing retainer gasket 1/64"
(2 required) Part #CC1392473 **\$2 ea**
- b. [Braden #MU-149G]
Bearing retainer gasket 1/32"
(2 required) Part #CC926747 **\$2 ea**
- c. [Braden #MU-144G]
Worm housing cover gasket
Part #CC926745 **\$4 ea**
- d. [Braden #MU-149A]
Worm seal - (2 required)
Part #CC926741 **\$15 ea**

New MU-2 & MU Winch Clutch Fork Brake Shoe with Lining

[Braden #MU-131-O]
-Lining CC926778
-Shoe CC915815
Vehicle Type: A,B,C,D Part #CC926776 **\$48**

New MU-2 & MU Winch Clutch Fork Brake Shoe Lining

Vehicle Type: A,B,C,D
[Braden MU-131-O] Part #CC926778 **\$3**

New MU-2 & MU Winch Brake Shoe Link Spring

[Braden #A-143-S]
Vehicle Type: A,B,C,D
Part #CC926780 **\$5**

NOS MU-2 & MU Winch Drag Brake Link



[Braden #MU-131L]
Vehicle Type: A,B,C,D
Part #CC926779 **\$32**

New MU-2 & MU Drag Brake Link Pin

[Braden #MU-131B]
Vehicle Type: A,B,C,D
Part #CC583737 **\$4.25**

New MU-2 & MU Winch Shifter Fork Pivot Pin

[Braden #MU-143B]
Vehicle Type: A,B,C,D
Part #CC926756 **\$8**

New MU-2 Winch Caution Plate



[ORD #7768194]
Aluminum-dash mounted
Vehicle Type: B,C Part #CC924645
Dataplate #8 **\$15**

New MU-2 Winch Shifter Fork Instruction Plate



Aluminum-winch mounted
Vehicle Type: D
Dataplate #17 **\$15**

LU-4 Winch

REBUILT LU-4 Braden Winch Assembly

[ORD #7728126]
[Braden #LU4]
Vehicle Type: E,F,J
Sandblasted and primed, all New bearings, gaskets and seals. Mounting brackets, cable and chain not included.
Part #CC1268841
Call For Price & Availability

USED LU-4 Winch Cable Drum Assembly

[Braden #LU4-135O]
Includes hub bearings
Vehicle Type: E,F,J
Part #CC1273600 **\$125**
Call For Availability

NOS LU-4 Winch Worm Housing

(aluminum w/bushing)
[Braden #LU4-134]
Vehicle Type: E,F,J
Part #CC1273595,CC1273594
Limited Quantity \$140

New LU-4 Winch Gasket & Seal Set

Vehicle Type: E,F,J

Note: These parts are sold as a set. (See below for items sold individually.)



Set consists of:

- a. Cable drum seal
 - b. Clutch shifter shaft seal
 - c. Worm seal (2)
 - d. Bearing retainer gasket 1/64" (2)
 - e. Bearing retainer gasket 1/32" (2)
 - f. Clutch housing seal
 - g. Worm housing cover gasket
- Part #LU4-GSS02 **\$91 set**

New LU-4 Winch Gasket & Seal Set Individual Items

- a. **Cable Drum Seal**
[Braden #LU4-135A] Part #CC1273619 **\$29**
- b. **Clutch Shifter Shaft Seal**
[Braden #LU4-143H] Part #CC1273621 **\$6.25**
- c. **Worm Seal-2 reqd.** [Braden #LU4-149A] Part #CC1273620 **\$15 ea**
- d. **Bearing Retainer Gasket 1/64"**
[Braden#MU-148G]Part#CC1392473 **\$2ea**
- e. **Bearing Retainer Gasket 1/32"-2 reqd.**
[Braden#MU-149G]Part#CC926747 **\$2ea**
- f. **Clutch Housing Seal**
[Braden #LU4-133A] Part #CC1273622 **\$21**
- g. **Worm Housing Cover Gasket**
[Braden #LU4-144G] Part #CC1273617 **\$4**

NOS LU-4 Clutch Indexing Plate

Vehicle Type: E,F,J
[Braden #LU4-193C]
Part #CC1273614 **\$35**



New LU-4 Winch to Bumper Bracket

[ORD #7705773] Vehicle Type: E,F
Part #CC1269472 **\$30 ea**



NOS LU-4 Winch to Frame Bracket

[ORD #7705772] Vehicle Type: E,F
2 required Part #CC1270712 **\$49 ea**



New LU-4 Winch Spacing Housing Plate

[Braden #LU4-184A] Vehicle Type: E,F
Part #CC1273608 **\$35**



New LU-4 Winch Cable Drum Hub Bushing

[ORD #7413023] [Braden #LU4-135B] Vehicle Type: E,F,J
Part #CC1273603 **\$35**



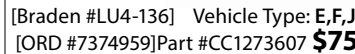
New LU-4 Winch Canvas Cable Cover

Vehicle Type: E,F,J
Part #WCCLU4 **\$60**



NOS LU-4 Winch Cable Drum Shaft

[Braden #LU4-136] Vehicle Type: E,F,J
[ORD #7374959]Part #CC1273607 **\$75**



New LU-4 Winch Clutch Shifter Handle

[Braden #LU4-143B] Vehicle Type: E,F,J
Part #CC1273613



NOS LU-4 Winch Clutch Shift Fork

[Braden #LU4-143] [ORD #7374953] Vehicle Type: E,F,J
Part #CC1273611 **\$35**



New LU-4 Winch Clutch Fork Shaft Key

Vehicle Type: E,F,J
Part #CC103905 **\$2**



New LU-4 Winch Clutch Shifter Shaft

[ORD#7374958] Vehicle Type: E,F,J
[Braden #LU-143A] Part #CC1273612 **\$49**



New LU-4 Winch Caution Plate (Aluminum)

[ORD #7351187] Vehicle Type: E,F
Part #CC1270662
Dataplate #29 **\$15**

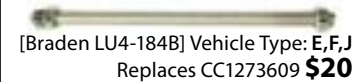
LU-4 Winch Worm Housing Cover w/Bushing

[Braden #LU4-144] Vehicle Type: E,F,J
Part #CC1237596 **\$60**
Call For Availability



New LU-4 Winch Spacing Bar (full threaded bar. includes 3 nuts.)

[Braden LU4-184B] Vehicle Type: E,F,J
Replaces CC1273609 **\$20**



USED LU-4 Hanil Winch Assembly (Take-off)

1960's Reproduction of the Braden LU-4. Specify Vehicle Type when ordering
Vehicle Type: (E,F will require original Dodge mounting brackets), (J includes 2 M-715 type top winch angle spacer plates).
[ORD#7728126] [Braden #LU4] Part #CC1268841-H **\$795**



Electric Winches

New 12 & 24 Volt Electric Winches



12,000 lb

Great way for resto-mods & conversions to have winching capabilities without breaking the bank or spending hours on labor trying to adapt an original winch!

Heavy Duty Wound Motors & rugged planetary gear sets. Featuring seals throughout the assembly to keep any and all contaminants outside of the unit. NO CHROME construction: stainless hardware, black zinc clutch handles, and anodized aluminum tie bars. Submersible solenoid with marine-grade connections at the Remote Control plug and socket.

-New 12 Volt Electric Winch Includes mounting channel & roller fairlead.
Part #N12VEW001 **\$799**

-New 24 Volt Electric Winch Includes mounting channel & roller fairlead.
Part #N24VEW002 **\$799**



Quick Tip 13: Winch Information
Your Braden Winch and what to check before using it.

Winch operation is potentially dangerous. If you are unfamiliar with how to use the winch, we suggest you read up on winch operation and/or get someone with winching experience to help you.

Ready to use your Braden Winch? The Braden Winch is a powerful tool and is generally overlooked when it comes to maintenance. For example, it is common to find that gear lube is low or non-existent. Many winches have been worked hard and only given attention when it was absolutely necessary. The list below will provide information on what you should check before you use your winch.

Checking the winch:

1. Check the winch **gearbox** for lube by removing the plug. Leaking seals and gaskets should be checked and replaced.
2. Check the **cable** carefully for frayed areas. Just because the cable is covered in grease doesn't mean that the cable is in good condition. Make sure the cable is attached solidly to the drum and free of kinks.
3. Check to see if your **cable chain** is properly attached with cable clamps and thimbles or the proper clevis. Make sure you have at least 3 clamps at the end of the cable if you are using clamps.

Braden winches were designed to use 7/16" cable.

4. Check your **de-clutch lever**. Whether you have an internal or external type, the de-clutch lever should be able to engage or disengage the sliding clutch smoothly.
5. Check the **Power Take-Off shaft universal joints** for tightness and the general condition of the yokes. Grease as necessary.
6. Check your **shear pin** and make sure you have some extras on hand when you're using your winch. Bolts, especially grade 5 or 8, are not a good substitute for the shear pin, as the bolts are too hard. The shear pin is soft enough to break when the winch is overloaded. This ensures that there is no damage done to the internal components of the winch.
7. Check your **winch mounting brackets** and replace any that have been damaged by the cable. Also check for stressed or cracked brackets and undersize mounting bolts.
8. Remove the cover plate and check the wear on the **bronze winch worm gear**, and replace the gear if necessary. Excessively worn teeth can result in a complete winch failure. Disassembling and rebuilding your winch will save you time and money in the long run and will ensure the safe mechanical operation of your winch, when you most need it.

Winch Lubrication

Try substituting the 80/90-weight gear lube usually used in PTO winches with John Deere Corn Head Grease. Not only does this grease do a great job of lubricating the winch gears, its higher viscosity leaves no chance for dripping gear lube. (Corn Head grease also works well in steering boxes.)

Your Braden Winch is a great tool - take good care of it and it will most certainly take good care of you!